

加工零件展示 Part machining display



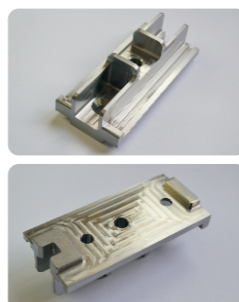
机 型: 430PB
零件材质: SUS304
零件尺寸: 36mm*20mm*16mm
刀具直径: 6mm
主轴转速: 6000r/min
切削厚度: 0.3mm
进给速度: F1200
加工时间: 约20min

Model: 430PB
Part Material: Sus304
Part Dimension: 36mm*20mm*16mm
Tool Diameter: 6mm
Spindle Speed: 6000r/min
Cutting Depth: 0.3mm
Feed Velocity: F1200
Processing Time: About 20min



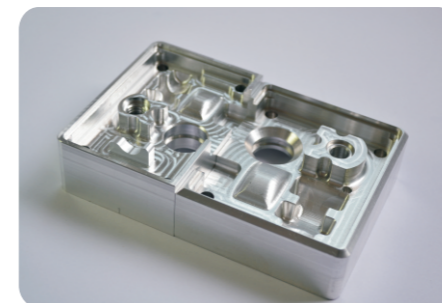
机 型: 540PQ
零件材质: 6061T6Al
零件尺寸: 282mm*76mm*55mm
刀具直径: 8mm
主轴转速: 5000r/min
切削厚度: 0.4mm
进给速度: F2000
加工时间: 约110min

Model: 540PQ
Part Material: 6061t6al
Part Dimension: 282mm*76mm*55mm
Tool Diameter: 8mm
Spindle Speed: 5000r/min
Cutting Depth: 0.4mm
Feed Velocity: F2000
Processing Time: About 110min



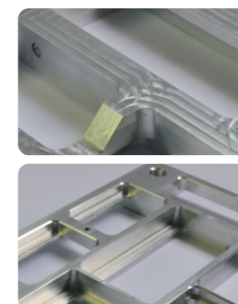
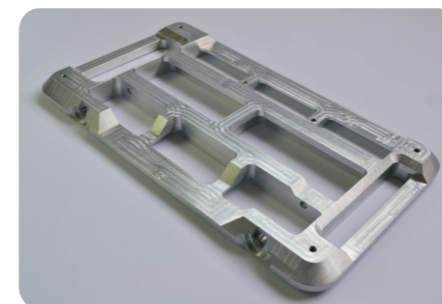
机 型: 430PB
零件材质: P20
零件尺寸: 78mm*36mm*30mm
刀具直径: 5mm
主轴转速: 7200r/min
切削厚度: 0.18mm
进给速度: F1400
加工时间: 约75min

Model: 430PB
Part Material: P20
Part Dimension: 78mm*36mm*30mm
Tool Diameter: 5mm
Spindle Speed: 7200r/min
Cutting Depth: 0.18mm
Feed Velocity: F1400
Processing Time: About 75min



机 型: 540PB
零件材质: SUS304
零件尺寸: 220mm*145mm*64mm
刀具直径: 6mm
主轴转速: 6800r/min
切削厚度: 0.35mm
进给速度: F1800
加工时间: 约170min

Model: 540PB
Part Material: Sus304
Part Dimension: 220mm*145mm*64mm
Tool Diameter: 6mm
Spindle Speed: 6800r/min
Cutting Depth: 0.35mm
Feed Velocity: F1800
Processing Time: About 170min



机 型: 540PQ
零件材质: 6061T6Al
零件尺寸: 260mm*150mm*32mm
刀具直径: 4/6/8mm
主轴转速: 5000-8000r/min
切削厚度: 0.2-1mm
进给速度: F1200-2000
加工时间: 约75min

Model: 540PQ
Part Material: 6061t6al
Part Dimension: 260mm*150mm*32mm
Tool Diameter: 4/6/8mm
Spindle Speed: 5000-8000r/min
Cutting Depth: 0.2-1mm
Feed Velocity: F1200-2000
Processing Time: About 75min



机 型: 430PB
零件材质: SUS304
零件尺寸: ϕ 50mm*19mm
刀具直径: 5mm
主轴转速: 6500r/min
切削厚度: 0.3mm
进给速度: F1200
加工时间: 约30min

Model: 430pb
Part Material: Sus304
Part Dimension: Φ 50mm*19mm
Tool Diameter: 5mm
Spindle Speed: 6500r/min
Cutting Depth: 0.3mm
Feed Velocity: F1200
Processing Time: About 30min